



GUTEX Thermosafe-homogen

TECHNICAL DATA SHEET



GUTEX Thermosafe-homogen is the universal wood fibre insulation board with outstanding insulation properties for roofs, façades, and floor ceilings.

Ingredients

- Untreated fir and spruce
- 4.0 % PUR resin
- 0.5 % paraffin

Disposal

- Waste code numbers as per AVV
030105, 170201

Bulk density ρ [kg/m ³]	~ 110
Nominal thermal conductivity λ_D [W/mK]	0.039
Vapour diffusion μ	4
Compressive stress/strength [kPa]	≥ 50
Tensile strength perpendicular to the surface [kPa]	≥ 5
Short-term water absorption [kg/m ²]	≤ 2
Air flow resistivity [kPa s/m ²]	≥ 60
Specific heat capacity [J/kgK]	2100
Maximum working temperature [°C]	110
Fire reaction Euro Class as per EN 13501-1	E
Product standard	EN 13171
Board designation	WF-EN13171-T4-WS2,0-CS(10/Y)50-TR5-MU4-AF,60





GUTEX Thermosafe-homogen

Detailed information

Joint type	Flush-mount				
Thickness [mm]	40	60	80	100	120
Length × width [mm × mm]	1200 × 625				
m ² /Piece(s)	0.75				
Weight per board [kg]	3.30	5.00	6.60	8.30	9.90
Weight per m ² [kg]	4.40	6.60	8.80	11.00	13.20
Piece(s)/Pallet	112	70	56	42	36
Square metres per pallet [m ²]	84.00	52.50	42.00	31.50	27.00
Weight per pallet [kg]	430	380	390	340	380
Nominal thermal resistance R _D [m ² K/W]	1.00	1.50	2.05	2.55	3.05
sd value [m]	0.16	0.24	0.32	0.40	0.48

Joint type	Rebate joint					
Thickness [mm]	140	160	180	200	220	240
Length × width [mm × mm]	1200 × 625					
Actual coverage: Length × width [mm × mm]	1185 × 610					
Actual coverage: Square metres per board [m ²]	0.72					
m ² /Piece(s)	0.75					
Weight per board [kg]	11.60	13.20	14.90	16.50	18.20	19.80
Weight per m ² [kg]	15.40	17.60	19.80	22.00	24.20	26.40
Piece(s)/Pallet	32	28	24	22	20	18
Square metres per pallet [m ²]	24.00	21.00	18.00	16.50	15.00	13.50
Weight per pallet [kg]	420			410		
Nominal thermal resistance R _D [m ² K/W]	3.55	4.10	4.60	5.10	5.60	6.15
sd value [m]	0.56	0.64	0.72	0.80	0.88	0.96





GUTEX Thermosafe-homogen

PRODUCT INFORMATION

Areas of use

- On-roof insulation on full-surface substrate
- Between-rafter insulation
- Insulation of the top floor ceiling
- Insulation of timber frame and timber panel construction
- Insulation of solid wood walls and masonry (rainscreen façade)
- Lightweight partitions

Advantages

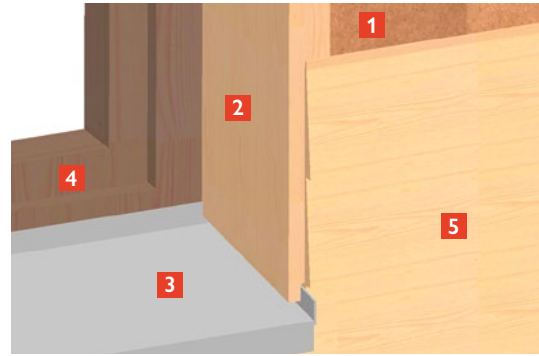
- Optimum thermal insulation
- Outstanding heat storage capacity → protection from heat in summer and cold in winter
- Excellent sound insulation
- Moisture-regulating
- Steam vapour-permeable
- Easy to work with
- Wood as the sustainable raw material → recyclable
- Manufactured in the direct vicinity of Switzerland (Waldshut, Black Forest)
- Ecologically safe (natureplus® certified)

Installation instructions

- Store and work with the boards in a dry place
- Installation only on a full-surface substrate
- Lay several layers in a staggered pattern
- Avoid cross joints
- Can only be used in floors under wet screed up to max. 60 mm. For other constructions, see GUTEX Thermosafe-wd and GUTEX Thermofloor
- The following are some of the tools that may be used to produce the cut:
 - Festool sword saws
 - Mafell DSS 300 cc
 - Band or circular saws with extraction unit
- After installation, the board must be fastened and immediately protected with weather protection (depending on application, e.g. GUTEX Multiplex-top or GUTEX Thermowall).
- For fastening with on-roof insulation or a rainscreen façade, the 'Screw dimensioning' forms can be found at www.gutex.de/service/bemessung-verbindingmittel
- Note the legal requirements for handling wood dust



Details rainscreen façade

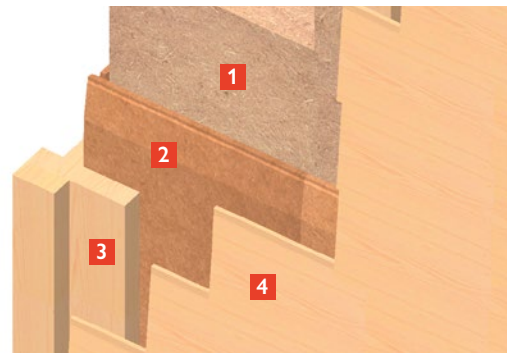
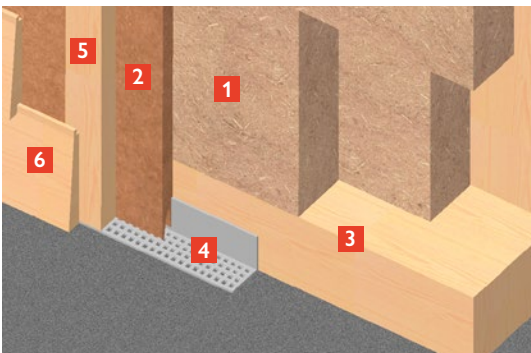


Reveal joint

- 1 GUTEX Thermosafe-homogen
- 2 GUTEX Multiplex-top/GUTEX Ultratherm/GUTEX Multitherm
- 3 Sealing tape
- 4 Reveal board
- 5 Counterlathing/rear ventilation
- 6 Wood façade

Window sill joint

- 1 GUTEX Multiplex-top/GUTEX Ultratherm/GUTEX Multitherm
- 2 Reveal board
- 3 Window sill
- 4 Window frame
- 5 Wood façade



Plinth/wall joint

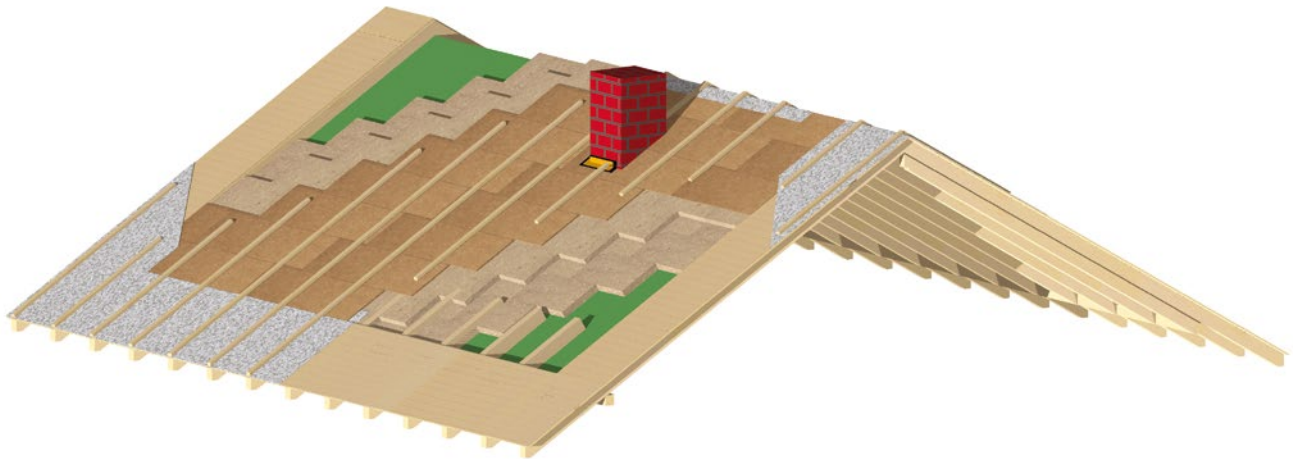
- 1 GUTEX Thermosafe-homogen
- 2 GUTEX Multiplex-top/GUTEX Ultratherm/GUTEX Multitherm
- 3 Plate
- 4 Air grate
- 5 Counterlathing/rear ventilation
- 6 Wood façade

Corner/wall joint

- 1 GUTEX Thermosafe-homogen
- 2 GUTEX Multiplex-top/GUTEX Ultratherm/GUTEX Multitherm
- 3 Corner profile
- 4 Wood façade

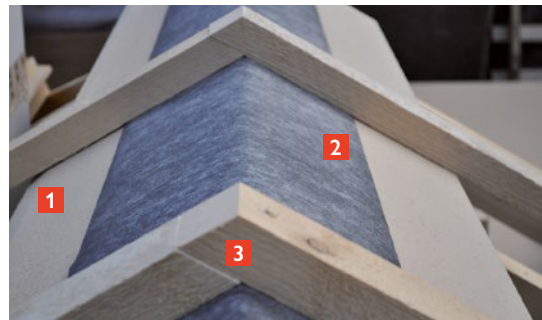


Details roof



Penetration joint

- 1 GUTEX Multiplex-top/GUTEX Ultratherm
- 2 GUTEX adhesive system
- 3 GUTEX caulking



Ridge

- 1 GUTEX Multiplex-top/GUTEX Ultratherm
- 2 Sarking
- 3 Counterlathing



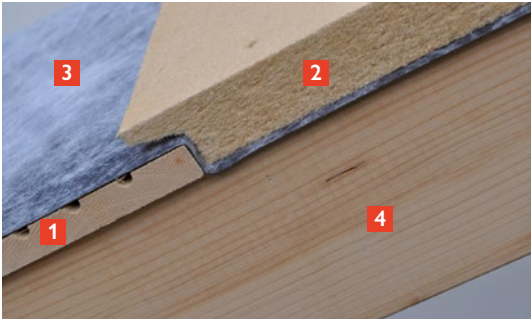
Verge

- 1 GUTEX Multiplex-top/GUTEX Ultratherm
- 2 GUTEX caulking
- 3 Sarking
- 4 Counterlathing



Valley

- 1 GUTEX Multiplex-top/GUTEX Ultratherm
- 2 GUTEX adhesive system
- 3 GUTEX caulking



Eaves 1. Variant

- 1 Canopy formwork
- 2 GUTEX Multiplex-top/GUTEX Ultratherm
- 3 Sarking
- 4 Dummy rafter



Eaves 2. Variant

- 1 GUTEX Multiplex-top/GUTEX Ultratherm
- 2 Sarking
- 3 Counterlathing
- 4 Dummy rafter